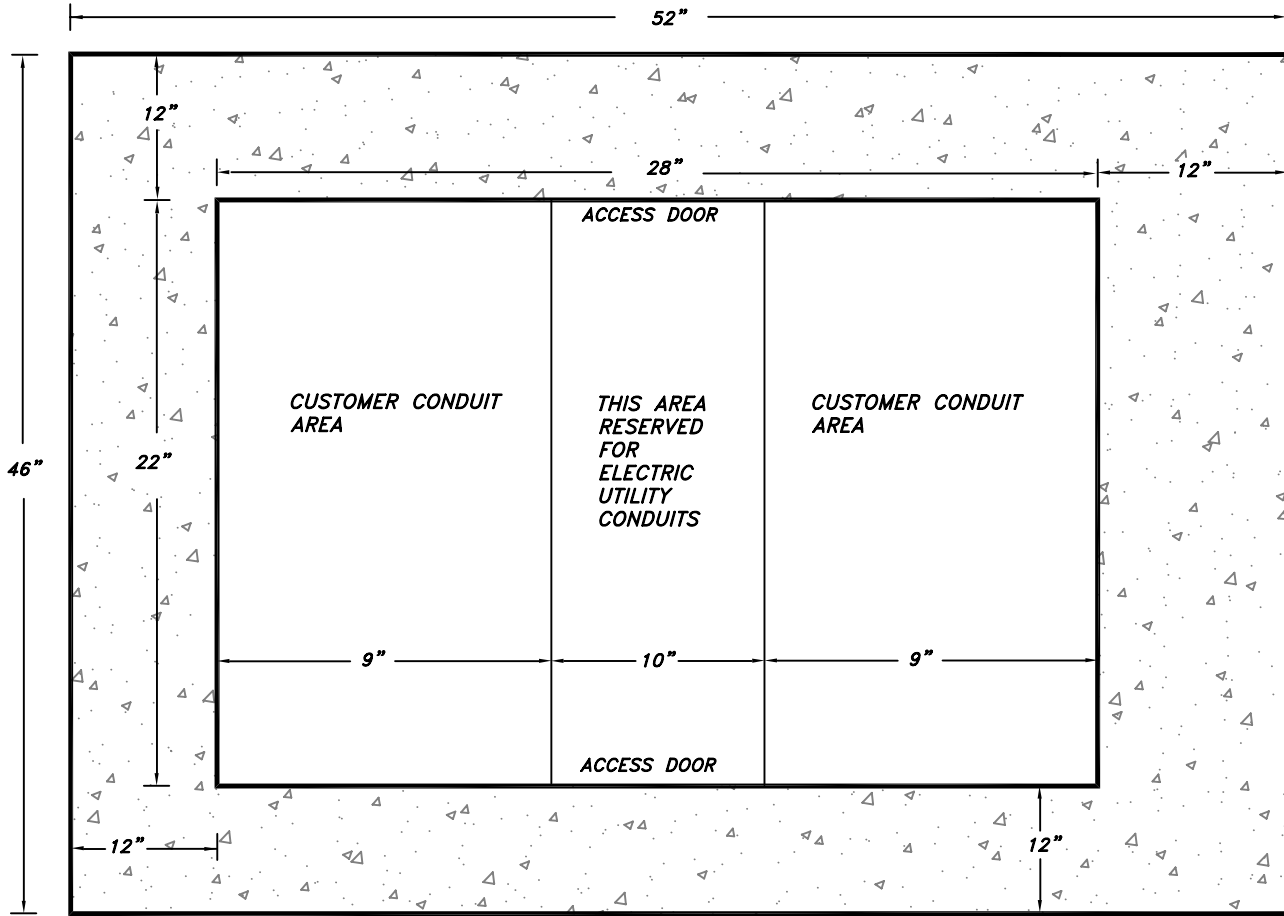
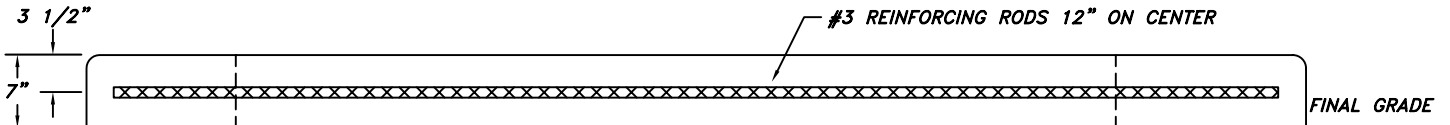


# SECONDARY CABINET PAD

## PLAN VIEW



## ELEVATION VIEW



NOTE: CONCRETE TO BE 3000 PSI AT 28 DAYS

**NOTES:**

1. THE SECONDARY CABINET PAD MUST FACE IN THE DIRECTION SPECIFIED BY THE ELECTRIC ENGINEERING DIVISION. SHRUBS AND STRUCTURES MUST BE KEPT SIX (6) FEET AWAY FROM ALL SIDES OF THE SECONDARY CABINET PAD.
2. THE SECONDARY CABINET PAD FORM MUST BE INSPECTED BY THE ELECTRIC ENGINEERING DIVISION, 351-6620, PRIOR TO POURING CONCRETE. THE CONTRACTOR SHALL SCHEDULE THIS INSPECTION AT LEAST TWENTY FOUR (24) HOURS IN ADVANCE.
3. THE CABINET SHOULD BE PLACED AT A DISTANCE TO ACCOMMODATE CONDUIT RADIUS BETWEEN TRANSFORMER PAD AND CABINET PAD.