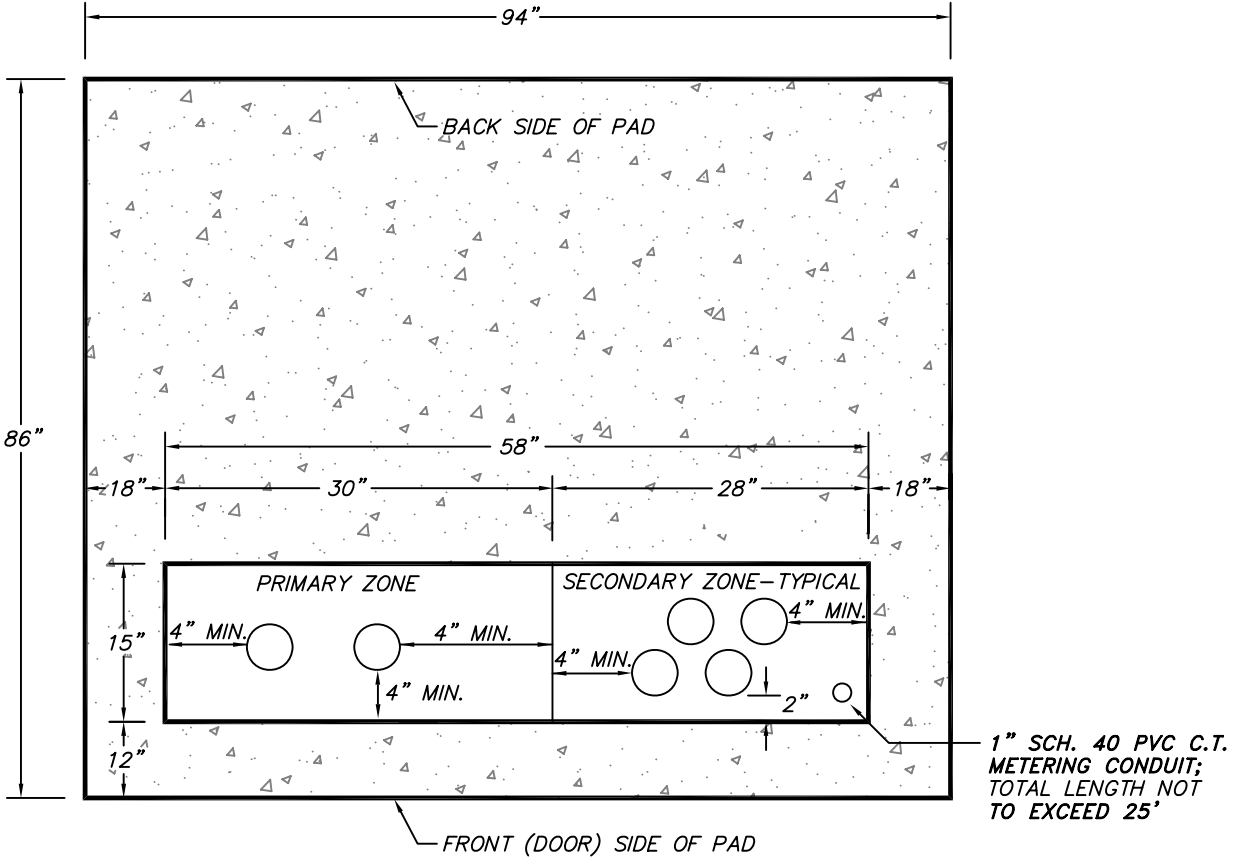
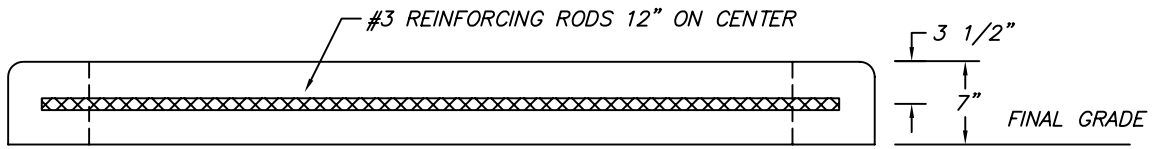


300KVA – 1000KVA  
120/208V, 120/240V, 277/480V  
PLAN VIEW



ELEVATION VIEW



NOTE: CONCRETE TO BE 3000 PSI AT 28 DAYS

- NOTES:
1. THE TRANSFORMER PAD MUST FACE IN THE DIRECTION SPECIFIED BY THE ELECTRIC ENGINEERING DIVISION. SHRUBS AND STRUCTURES MUST BE KEPT NINE (9) FEET AWAY FROM THE FRONT SIDE AND THREE (3) FEET AWAY FROM THE OTHER SIDES OF THE TRANSFORMER.
  2. THE TRANSFORMER FORM MUST BE INSPECTED BY THE ELECTRIC ENGINEERING DIVISION, 351-6620, PRIOR TO POURING CONCRETE. THE CONTRACTOR SHALL SCHEDULE THIS INSPECTION AT LEAST TWENTY FOUR (24) HOURS IN ADVANCE.